

TM-18

Fish processing Machine

新鮮な発想で時代を切る「カットマンシリーズ」

CUT-MAN



series③



Small size band saw for frozen fish

Now on sale
Direct driven motor

Block cutting

Curve cut

SAKU cut

Around machine



POINT

- *Direct connection(bearing) motor drive pully
- *Low to high speed blade rotation
- *Reduced dust craps
- *Vertical Stainless tire
- *Safety structured

Compact round cutting machine for fence and round shape

MKE

TM-18

Fish processing Machine Compact & Friendly

Direct driven motor

powerful and smooth operation thanks to the configuration of the direct connection of lower wheel with motor.

low noise, no vibration

We were able to minimize the noise and working vibration by removing the Vbelt from traditional model.

low to high speed blade

By the invarior control, we can adjust the blade rotation speed by adjusting switch for any food processing you will work.

Stainless Steel tire(wheel)

Stainless steel tire is standard equipment due to cleanliness.

Safety

We equip the emergency stop button. A motor brake run quickly and stops the blade rotation.

Blade size

We prepare you the 0.35mm to 0.65mm blade which is suitable for manufacturing foods. Standard blade thickness is 0.5mm.

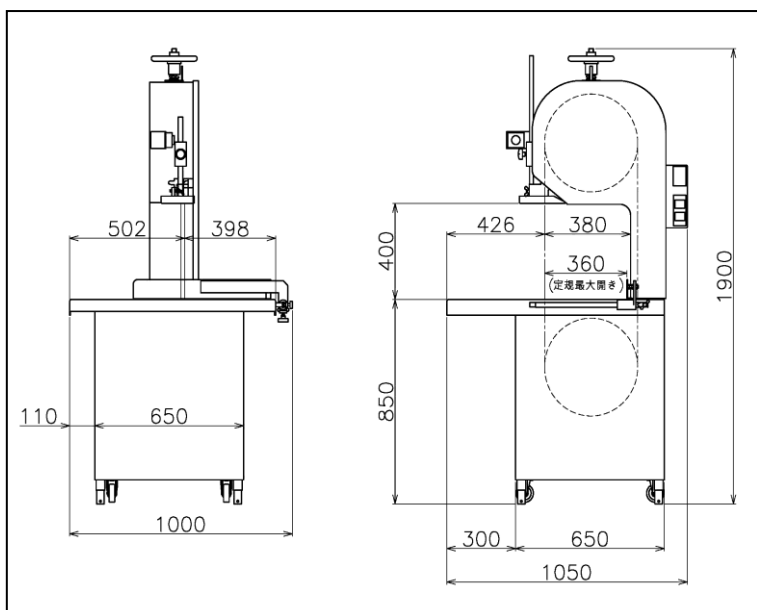


Option

- *"We are now available to produce a bandsaw safety machine
- *which stops the motor when opening the doors(top door and bottom door).

Rental. Lease

rental. Please contact MKE salesman for the lease's request.
Customer note:



Specification

Max. sawing height	400mm
Area (table)	950x900mm
Height (table)	850mm
Dimension (Machine)	1050x1000x1900mm
Weight	250kg
Motor	1.5kw 2.2kw 4P
Power Supply	3 Phase 200V 50/60Hz
blade speed	1700/2300m/min



MK ENGINEERING CO., LTD.
〒425-0041 1060 Ishizu,
Yaizu City Shizuoka Pref., Japan
TEL 81-54-625-8360 FAX 81-54-625-8361
<http://www.mk-e.co.jp>

agency