

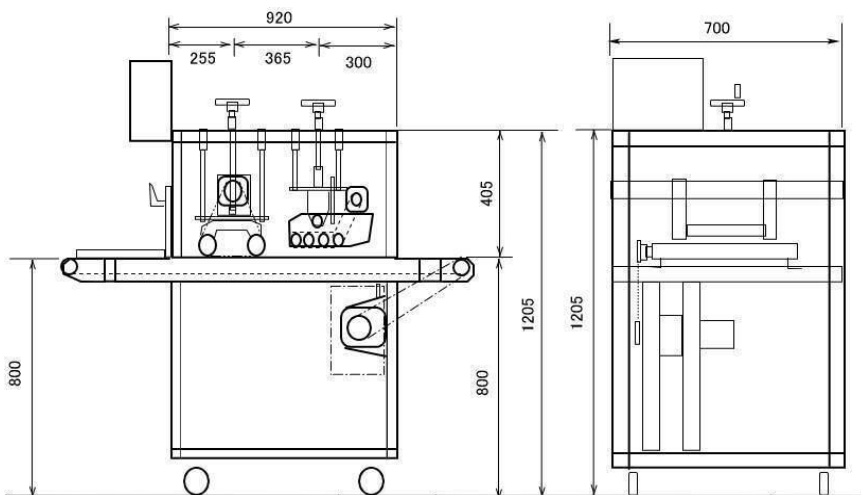
# MK ENGINEERING CO.,LTD

series 12

## Rolling Machine for tuna minece NT-400



- Continuous press processing
- Easy thickness adjustment
- Water washable  
(made of stainless steel)
- with variable speed controller
- Convinient to move with caster



### Specification (unit:mm)

|                     |                   |
|---------------------|-------------------|
| Dimension (Machine) | 1590 × 1205 × 700 |
| Speed               | V=4~10m/min       |
| Power Supply        | 3 Pahse, 200V     |

\* Rollers made of resin  
Body etc. SUS304

 **MK Engineering**

MK ENGINEERING CO., LTD.  
〒425-0041 1060 ISHIZU,  
Yaizu City Shizuoka Pref., Japan  
TEL 81-54-625-8360 FAX 81-54-625-8361  
<http://www.mk-e.co.jp>