

MKE JAC-37-2

series 23

Air Jet Water Separator (special Version)

Blowing off waterdrop adhered on the defrosted tuna
&
Shortening the operation time at the next process

特徴

▪ **Compact design & high efficiency**

High processing performance, thanks to the ultimately minimized machine with energy saving design and variable conveyor speed 5 - 20 m/min.

▪ **More hygienic design with high cleaning performance**

- Made of the material SUS304
- Enable to wash out completely, provided double front doors
- Sterilized by alcohol atomizing system after the

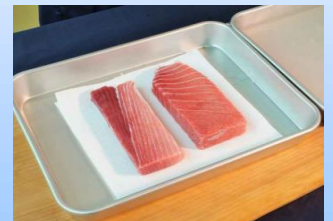
▪ **Easier maintainability**

No worry even during the cleaning operation mode, thanks the application of water proof type instrumentations including operation switches.

Enable easier maintenance & adjustment, thanks to the wa proof frame / cover with those simplified design



Water blowing -off after defrosting tuna



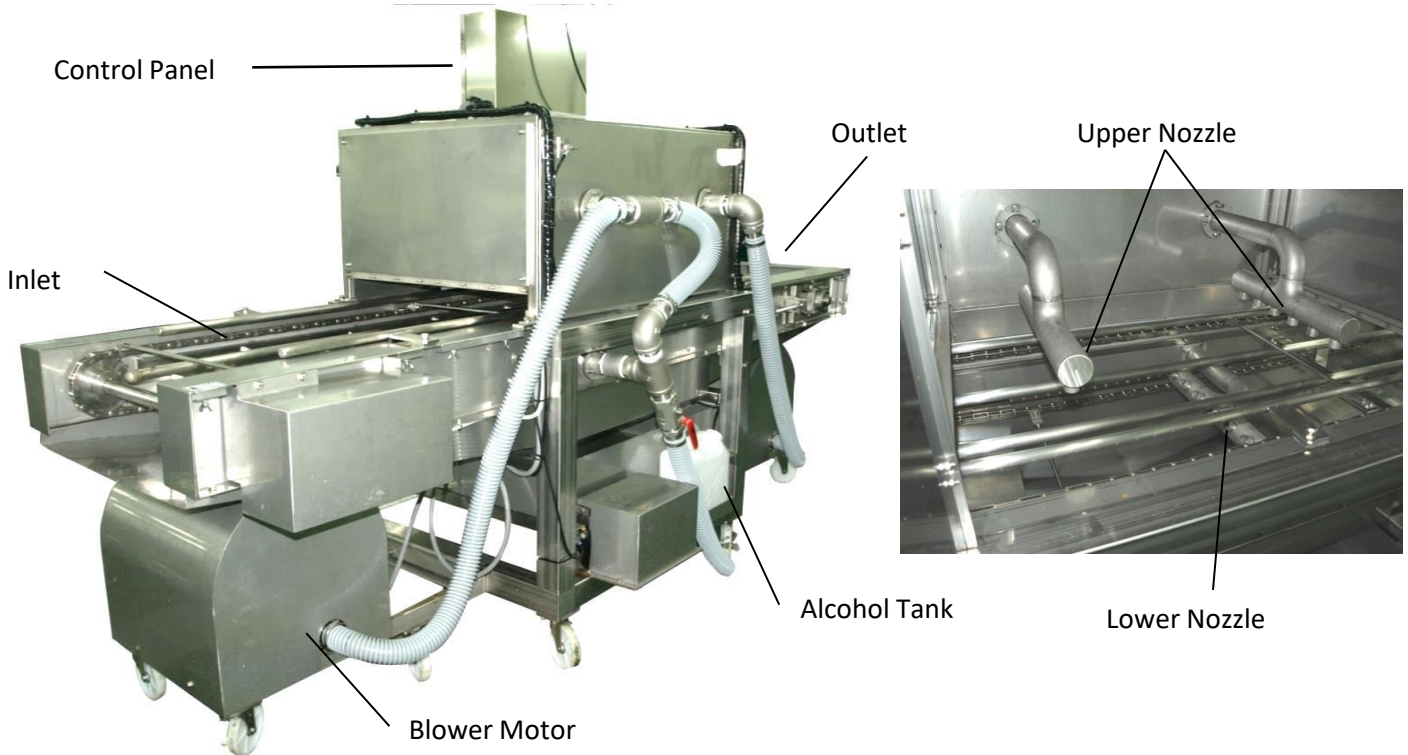
MK ENGINEERING CO.,LTD

1060 ISHIZU, YAIZU-SHI, SHIZUOKA-KEN, 425-0041, JAPAN

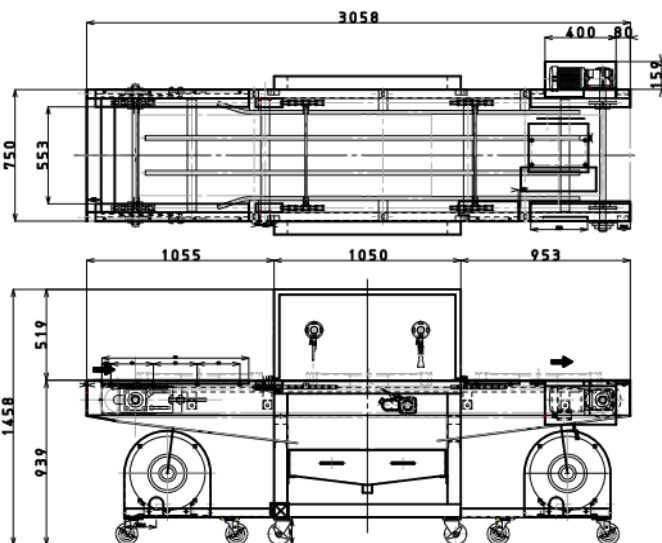
TEL054-625-8360 FAX054-625-8361

MKE JAC-37-2

Air Jet Water Separator (special Version)



Mechanical Dimensional Drawing



Specification

Water Separation (effective width)	500 mm
Max. Height of Tuna	200 mm
Machine Dimension	3,058L x 750W x 1458H
Conveyor Speed	2~20 m/min (variable speed)
Upper Nozzle	6 pieces x 2 rows
Lower Nozzle	6 pieces x 2 rows
Blower Motors	3.7kw / 2 sets, 3p AC 200V
Conveyor Motor	0.4kw 3p, AC 200V
Alcohol Atmizing Pump	0.2kw, 3p AC 200V

MK ENGINEERING CO.,LTD

1060 ISHIZU, YAIZU-SHI, SHIZUOKA-KEN, 425-0041, JAPAN

TEL054-625-8360 FAX054-625-8361